

# INJECT { } AIR

## Treatment Dolly

### User guide



# Trailer brake system treatment procedure

1. Drop all air from all service brake tanks and shut off drain valves.
2. Make sure the air control valves on the INJECT-AIR are in fully closed position. Fill reserve tank with treatment fluid.
3. Connect the INJECT-AIR's pressure entry port to the shop's air supply with a hose and adjust the pressure regulator to desired pressure (do not exceed 130 PSI). \*
4. Connect treatment delivery port (orange) to the Trailer's air supply line (red – emergency side).
5. Make sure the treatment delivery port's 2-way valve is in the delivery position. \*\*\*\*
6. Turn power "ON" on the INJECT-AIR treatment system's dosage selector.
7. Press RED button on the dosage selector to charge the air treatment fluid in the INJECT-AIR. \*\*
8. Slowly open the INJECT-AIR's air control valve and charge air system for approximately 1 minute.
9. Close the air control valve on the INJECT-AIR and make sure it is in fully closed position.
10. Release air pressure from trailer's supply line by switching 2-way delivery valve to exhaust. \*\*\*
11. Remove the INJECT-AIR's delivery glad hand from the trailer's "supply" line.
12. Connect the INJECT-AIR's delivery glad hand to the trailer's service brake "Control" line (blue).
13. Make sure the treatment delivery port's 2-way valve is in the delivery position. \*\*\*\*
14. Press BLUE button on the dosage selector to charge the air treatment fluid in the INJECT-AIR. \*\*
15. Slowly open the INJECT-AIR's air control valve and charge service control line until vapor / liquid exhaust from the trailer's supply line and shut the INJECT-AIR's air control valve.
16. Connect the air supply delivery port (black) to the trailer's supply line.
17. Open the air supply control valve to finish charging the service tanks.
18. Press blue button on the dosage selector to charge the air treatment fluid in the INJECT-AIR. \*\*
19. Open the INJECT-AIR's air control valve and make at least 10 full brake applications by switching the treatment delivery port's 2-way valve back and forth from delivery to exhaust positions.
20. Release air pressure from trailer's supply line by switching 2-way delivery valve to exhaust. \*\*\*
21. Disconnect the INJECT-AIR completely from the trailer's glad hands and release all pressure from delivery system.
22. Turn power "OFF" on the INJECT-AIR treatment system.
23. Machine can be used to finish charging the trailer's air system if desired.
24. Disconnect air supply hose from the machine when done and store machine in a safety compliant area in accordance with safety recommendations related to the treatment fluid in the machine's reserve tank.
25. Always handle the INJECT-AIR Treatment Dolly carefully and safely.

## Procedure references

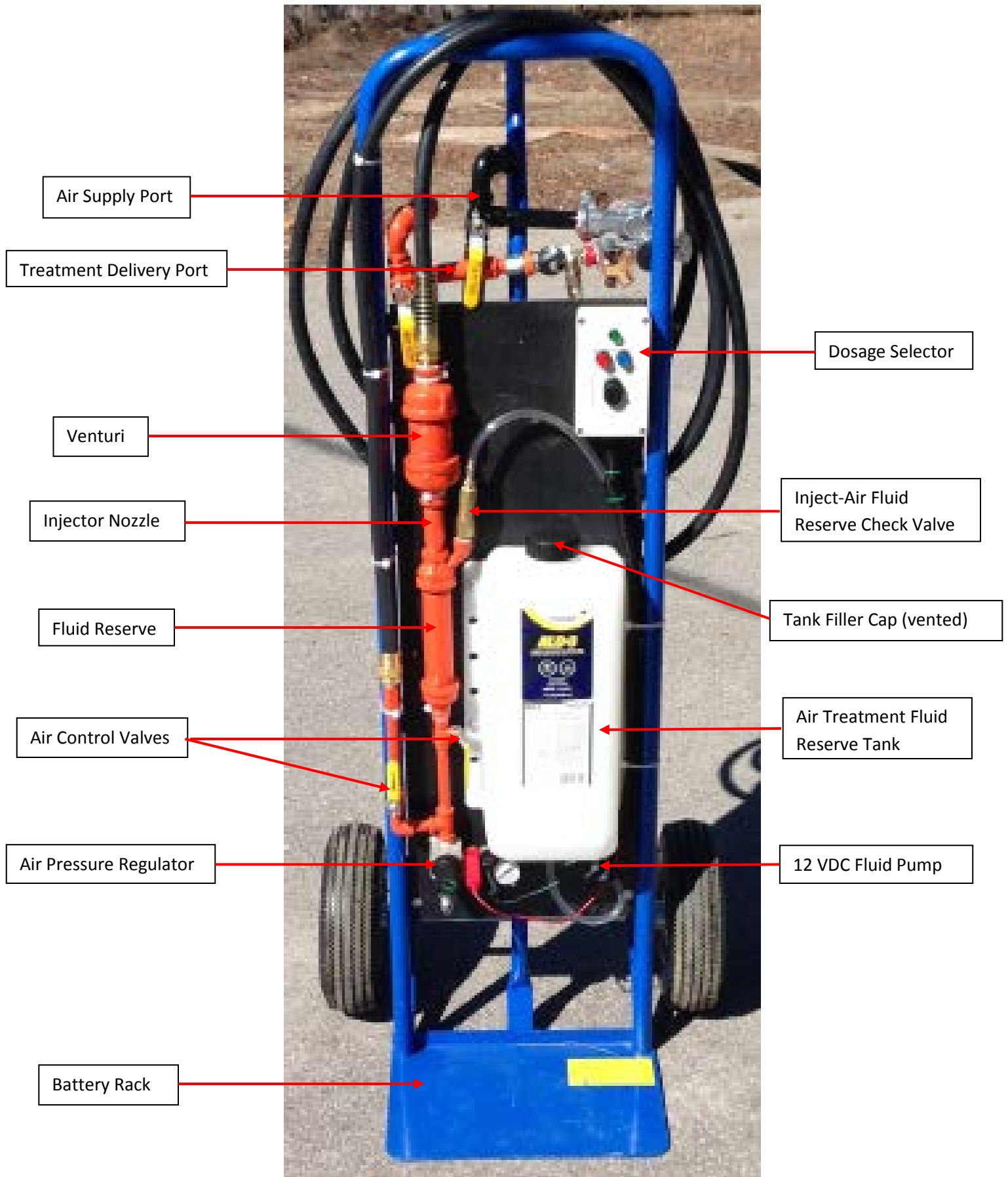
\* Refer to fig. 1 and 2 to identify components.

\*\* Refer to dosage guide chart below.

\*\*\* Pressurized air lines may release treatment product when disconnected. Make sure to stand clear from eventual treatment fluid spillage to prevent personal injury.

\*\*\*\* Refer to flow direction arrows on 2-way valve lever.

# Machine description



## Step by step procedure

1. Drop all air from all service brake tanks and shut off drain valves.



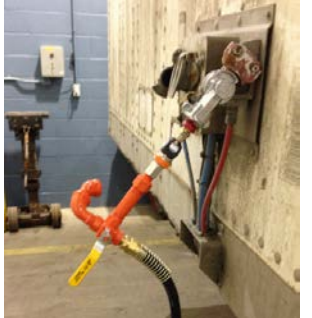
2. Make sure the air control valves on the INJECT-AIR are in fully closed position. Fill reserve tank with treatment fluid. Connect 12 VDC Battery to power machine & secure battery safely.



3. Connect the INJECT-AIR's pressure entry port to the shop's air supply with a hose and adjust the pressure regulator to desired pressure (do not exceed 130 PSI). \*



4. Connect treatment delivery port (orange) to the Trailer's air supply line (red – emergency side).



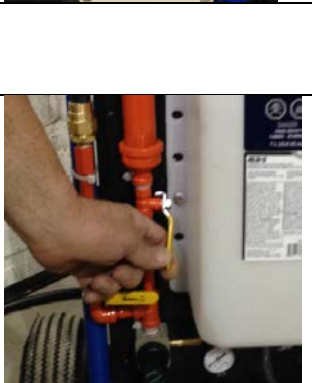
5. Make sure the treatment delivery port's 2-way valve is in the delivery position. \*\*\*\*








6. Turn power "ON" on the INJECT-AIR treatment system's dosage selector.



7. Press briefly the RED button on the dosage selector to charge the air treatment fluid in the INJECT-AIR. \*\*



8. Slowly open the INJECT-AIR's air control valve and charge air system for approximately 1 minute.

	<p>9. Close the air control valve on the INJECT-AIR and make sure it is in fully closed position.</p>	
	<p>10. Release air pressure from trailer's supply line by switching 2-way delivery valve to exhaust. ***</p>	
	<p>11. Remove the INJECT-AIR's delivery glad hand from the trailer's "supply" line.</p>	
	<p>12. Connect the INJECT-AIR's delivery glad hand to the trailer's service brake "Control" line (blue).</p> <p>13. Make sure the treatment delivery port's 2-way valve is in the delivery position. ****</p>	
	<p>14. Press BLUE button on the dosage selector to charge the air treatment fluid in the INJECT-AIR. **</p>	
	<p>15. Slowly open the INJECT-AIR's air control valve and charge service control line until vapor / liquid exhaust from the trailer's supply line and shut the INJECT-AIR's air control valve.</p>	
	<p>16. Connect the air supply delivery port (black) to the trailer's supply line.</p>	

17. Open the air supply control valve to finish charging the service tanks.

18. Press blue button on the dosage selector to charge the air treatment fluid in the INJECT-AIR. \*\*



19. Open the INJECT-AIR's air control valve and make at least 10 full brake applications by switching the treatment delivery port's 2-way valve back and forth from delivery to exhaust positions.



20. Release air pressure from trailer's supply line by switching 2-way delivery valve to exhaust. \*\*\*

21. Disconnect the INJECT-AIR completely from the trailer's glad hands and release all pressure from delivery system.



22. Turn power "OFF" on the INJECT-AIR treatment system.



23. Machine can be used to finish charging the trailer's air system if desired.

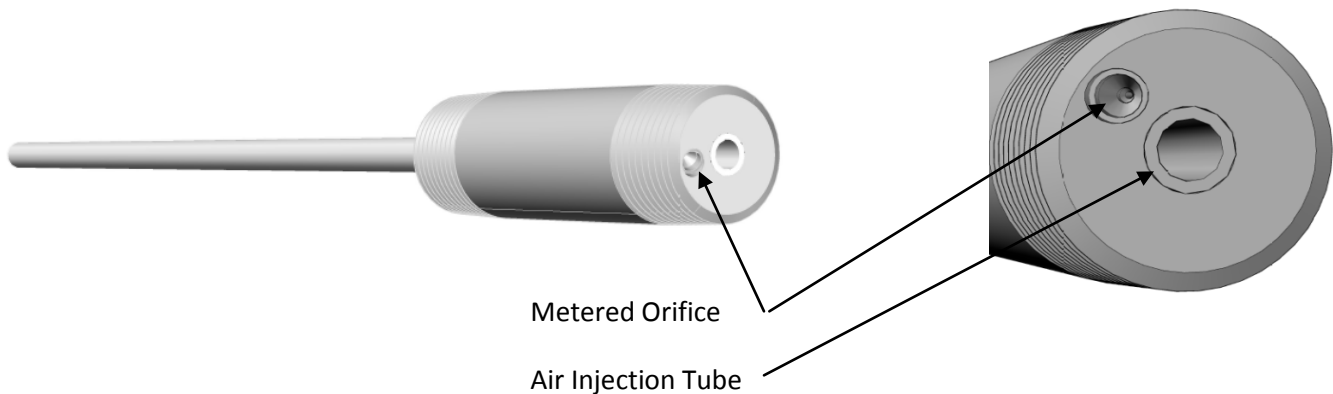
24. Disconnect air supply hose from the machine when done and store machine in a safety compliant area in accordance with safety recommendations related to the treatment fluid in the machine's reserve tank.

<b>Dosage guide</b>				
Description	Application	Initial dosage	Maintenance dosage	Frequency
Trailer air supply line (RED)	Single axle	2 X 75 ml	75 ml	Every PM
	2 axles	2 x 100 ml	100 ml	Every PM
	3 axles	2 X 150 ml	150 ml	Every PM
	4 axles	2 x 200 ml	200 ml	Every PM
	Each additional axle		50 ml	Every PM
Trailer service brake control line (BLUE)	Single axle	15 ml	15 ml	Every PM
	2 axles	15 ml	15 ml	Every PM
	3 axles	30 ml	30 ml	Every PM
	4 axles	30 ml	30 ml	Every PM
	Each additional axle		15 ml	Every PM
Truck & tractor	Single rear axle	2 X 75 ml	75 ml	Every PM
	2 rear axles	2 x 100 ml	100 ml	Every PM
	3 rear axles	2 X 150 ml	150 ml	Every PM

## INJECT-AIR maintenance

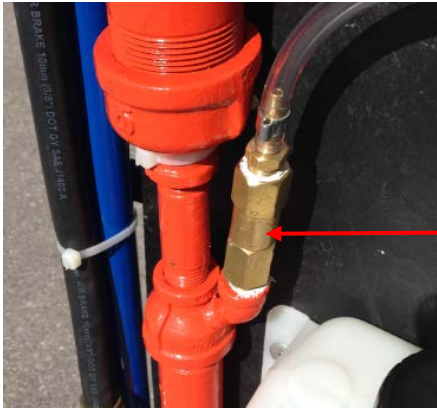
The INJECT-AIR is equipped with an atomizer nozzle which uses a metered orifice to release the treatment fluid gradually. In the event of an occlusion (blockage) of this metered orifice, the release of treatment fluid will be retarded and partly compromised. If the operator notices that the INJECT-AIR does not release the complete amount of treatment fluid during a normal injection cycle as described above, the atomizer nozzle could be blocked with dirt introduced with treatment fluid. The atomizer nozzle can be removed from the unit and the metering orifice can be cleaned with a common acetylene torch tip cleaning tool. Select the appropriate tip cleaning broach and clean the atomizer nozzle's metered orifice hole. Reassemble the atomizer nozzle on the unit with proper sealing agent in the tapered threads.

### Atomizer Nozzle



## Inject-Air's fluid reserve Check Valve

The Check Valve may need to be cleaned if pressure from the Inject-Air transfers air from the pressurized side of the device to the fluid feeding system. The operator will notice this condition when the fluid transfer pump un-primed itself between treatment applications.



### Check Valve Maintenance

Check Valve is composed of 5 parts that can be disassembled for maintenance and cleaning.

## Warranty

The INJECT-AIR is guaranteed to be free of manufacturing defects for one (1) year from purchase date. Any defects resulting from improper initial assembly or from using water, corrosive chemicals, non-alcohol or non-methanol based treatment fluids are not warranted.

## Disclaimer

Manufacturer is not responsible for any and all damages resulting from the use of the INJECT-AIR.

Manufacturer is not responsible for any and all personal injury resulting from the use of the INJECT-AIR.

## Tech support

Video - An instructional video tutorial is available on our web site at : [www.cftsgroup.com](http://www.cftsgroup.com)

Online - Our technical consultants are available online at : [support@cftsgroup.com](mailto:support@cftsgroup.com)

Phone - Our toll free technical support hotline is on duty during normal business hours

Monday to Friday 8 a.m. to 6 p.m. (EDST) Atlantic time **1-877-765-9629**