



SBOC-114

Advanced Wheelend Technologies

Service bulletin

Using the proper dust seals for "Optimum-Contact"

All "Optimum Contact" bushings are shipped seals and / or O-Rings

Part #	Inner seal # (shim side)	Outer seal # (Brake side)
BBOC-15125	SL-1500-DA	SL-1500-DA-HD
BBOC-15125-T	SL-1500	SL-1500-HD
BBOC-15150	SL-1500	SL-1500-HD
BBOC-152380	SL-WV-130	SL-WV-130
BBOC-152500	SL-WV-130	SL-WV-130
BBOC-16125	SL-1625	SL-1625-HD
BBOC-16150	SL-1625	SL-1625-HD
BBOC-1625-RW4B	SL-1625	SL-1625-HD
BBOC-FRU-1625	SL-1625-FRU	SL-1625-FRU
BBOC-FRU-1932	ORG-223	ORG-223
BBOC-NTX-15200	SL-1500-02	SL-1520-NTX-HD
THI-1500-01-os	SL-1500	SL-1500-HD
THI-1500-02-os	SL-1500	SL-1500-HD
THI-1500-STD	SL-1500	SL-1500-HD
THIC-15-01-os-L	SL-1500	SL-1500-HD
THIC-15-01-os-R	SL-1500	SL-1500-HD
THIC-15-02-os-L	SL-1500	SL-1500-HD
THIC-15-02-os-R	SL-1500	SL-1500-HD
THIC-15-STD-L	SL-1500	SL-1500-HD
THIC-15-STD-R	SL-1500	SL-1500-HD

SPIDER + oversize bushing applications

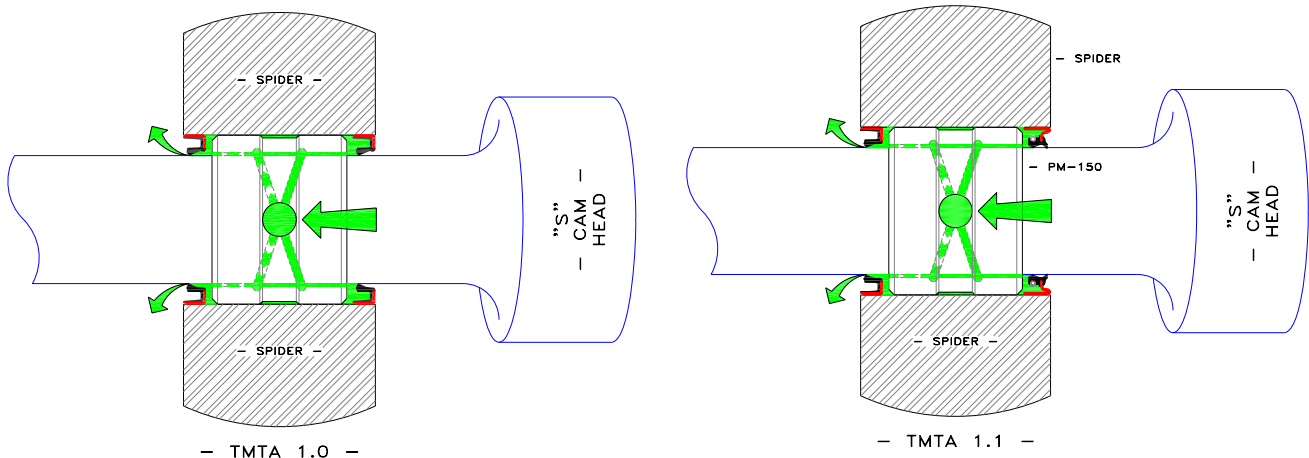
Part #	Inner seal # (shim side)	Outer seal # (Brake side)
BBSP-15125-01	SL-1500-01	SL-1500-01-HD
BBSP-15125-02	SL-1500-02	SL-1500-02-HD
BBSP-15150-01	SL-1500-01	SL-1500-01-HD
BBSP-15150-02	SL-1500-02	SL-1500-02-HD
BBSP-15151-STD	SL-1500-01	SL-1500-01-HD
BBSP-15152-STD	SL-1500-02	SL-1500-02-HD
BBSP-16125-01	SL-1625-01	SL-1625-01-HD
BBSP-16125-02	SL-1625-02	SL-1625-02-HD
BBSP-16150-01	SL-1625-01	SL-1625-01-HD
BBSP-16150-02	SL-1625-02	SL-1625-02-HD
BBSP-FRU-1625-01	SL-1625-FRU	SL-1625-FRU
BBSP-FRU-1625-02	SL-1625-FRU	SL-1625-FRU
BBSP-NTX-15200-01	SL-1520-NTX-01	SL-1520-NTX-01-HD
BBSP-NTX-15200-02	SL-1520-NTX-02	SL-1520-NTX-02-HD

Spider dust seal installation

Install the spider dust seals in a way that they will allow grease to purge easily from the cam-bushing assembly.

The outer seal must be installed with its sealing lip pointing toward the cam-bushing (**positive installation**), in order to keep the grease from entering the brake shoes and drum assembly, during lubrication, thus contaminating the brake shoes and drum.

The inner seal must be installed with its sealing lip pointing outward from the cam-bushing (**negative installation**), in order to let the grease escape from the cam-bushing assembly during lubrication. Figure 16 shows proper seal installation.



Single lip seal design

Double lip seal design

For information about this service bulletin, please call toll free

1-877-765-9629